



Method Statement – Quad Cropper 600 diameter.



The Quad is to be used for the purpose of breaking away sections of concrete, which surround reinforcement bars within a round Augured Pile. The Quad Cropper is powered by the bucket crowd circuit or dual flow hammer circuit of an excavator. The Quad Cropper is hung from the dipper arm of the excavator using the supplied 4 leg lifting chains. **It is your responsibility to provide a certified and appropriately rated D-Shackle.**

Before use always ensure that operatives have familiarised themselves with the cropper and its operation and have read this method statement. Where possible a demonstration of the cropper is recommended. Operatives should be aware of their hands when manoeuvring the cropper, as the controls for the excavator are not in their control. All operatives should wear the appropriate P.P.E for the task.

Using the Cropper - First step is to lower the cropper over the pile, if using a banksman to locate he must now remove himself from the pile cropping exclusion zone. Driver may now cut the pile leaving reinforcement at required level. Excess pile is now safely inside cropper ready for safe removal to delegated area or dumper. Should anyone be required to work underneath the cropper, ensure the excavator is turned off with the drivers' hands in clear view. Always release pressure from the hydraulics using release valve or by wagging excavator controls when removing/installing cropper.

Daily Maintenance

* All bolts, blades, hydraulic pipes and fittings should be checked for any movement and tightened accordingly at least twice daily.

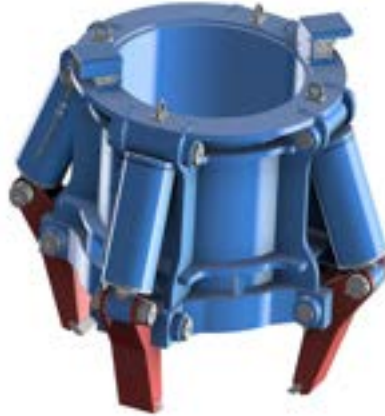
* All grease nipples to be greased.

During operation check for any oil leaks and report to NPC immediately.





Method Statement – Quad L 850mm Cropper



The Quad is to be used for the purpose of breaking away sections of concrete, which surround reinforcement bars within a round Augured Pile. The Quad Cropper is powered by the bucket crowd circuit or dual flow hammer circuit of an excavator. The Quad Cropper is hung from the dipper arm of the excavator using the supplied 4 leg chainsling with certified safe working load of 8.4T

Before use always ensure that operatives have familiarised themselves with the cropper and its operation, and have read this method statement. Where possible a demonstration of the cropper is recommended. Operatives should be aware of their hands when manoeuvring the cropper, as the controls for the excavator are not in their control. All operatives should wear the appropriate P.P.E for the task.

Using the Cropper - First step is to lower the cropper over the pile, if using a banksman to locate he must now remove himself from the pile cropping exclusion zone. Driver may now cut the pile leaving reinforcement at required level. Excess pile is now safely inside cropper ready for safe removal to delegated area or dumper. Should anyone be required to work underneath the cropper, ensure the excavator is turned off with the drivers' hands in clear view. Always release pressure from the hydraulics using release valve or by wagging excavator controls when removing/installing cropper.

Daily Maintenance

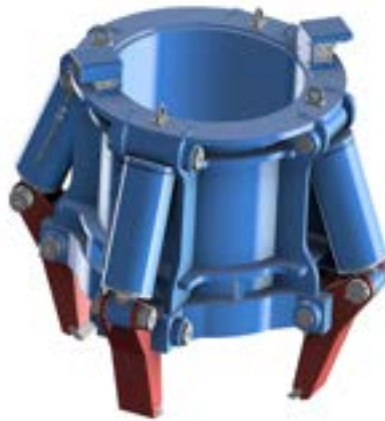
- All bolts, blades, hydraulic pipes and fittings should be checked for any movement and tightened accordingly at least twice daily.
- All grease nipples to be greased.

During operation check for any oil leaks and report to NPC immediately.





Method Statement – Quad XL 1050mm Cropper



The Quad is to be used for the purpose of breaking away sections of concrete, which surround reinforcement bars within a round Augured Pile. The Quad Cropper is powered by the bucket crowd circuit or dual flow hammer circuit of an excavator. The Quad Cropper is hung from the dipper arm of the excavator using the supplied 4 leg chainsling with certified safe working load of 8.4T

Before use always ensure that operatives have familiarised themselves with the cropper and its operation, and have read this method statement. Where possible a demonstration of the cropper is recommended. Operatives should be aware of their hands when manoeuvring the cropper, as the controls for the excavator are not in their control. All operatives should wear the appropriate P.P.E for the task.

Using the Cropper - First step is to lower the cropper over the pile, if using a banksman to locate he must now remove himself from the pile cropping exclusion zone. Driver may now cut the pile leaving reinforcement at required level. Excess pile is now safely inside cropper ready for safe removal to delegated area or dumper. Should anyone be required to work underneath the cropper, ensure the excavator is turned off with the drivers' hands in clear view. Always release pressure from the hydraulics using release valve or by wagging excavator controls when removing/installing cropper.

Daily Maintenance

- All bolts, blades, hydraulic pipes and fittings should be checked for any movement and tightened accordingly at least twice daily.
- All grease nipples to be greased.

During operation check for any oil leaks and report to NPC immediately.

